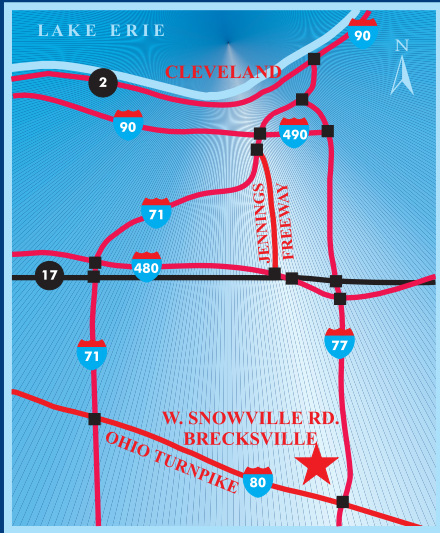


4.6 to 16.5 ACRE SITES - BUILD-TO-SUIT Ideal for Office or Light Industrial



Looking North from I-80 Ohio Turnpike
with I-77 at the right

4.6 TO 16.5 ACRE SITES

- Zoned Office or Light Industrial
- Will build to suit
- Just north of I-80 Ohio Turnpike
- Ohio Turnpike Visibility
- Just west of I-77
- Located in the City of Brecksville
- High image community
- Mid-way between Cleveland and Akron
- Access via W. Snowville Road
- Easy access to I-271



Looking East along W. Snowville Rd.
with I-80 Ohio Turnpike at the right



CORPORATE PROPERTIES

RAY FOGG CORPORATE PROPERTIES, LLC • 981 Keynote Circle, Suite 15 • Cleveland, OH 44131

The information contained herein is from sources deemed reliable, but no warranty or representation is made to the accuracy thereof.

flexible spaces
all the right places.

Mark Ray, Director of Leasing

216-351-7976, Ext. 244

E-mail: markray@rayfogg.com

fogg.com

P.P. NO. 604-15-1
 JOHN H. & BETTY A. MEAVER
 2-25-55

O.L. 61
 O.L. 60
 O.L. CORNER

O.L. 67

O.L. 61
 O.L. 66

0.57 Ac.
 0.57 Ac.

P.P. NO. 604-21-1
 GEORGE N. & PATRICIA T. STRELOW
 4-3-85

3.11 Ac.
 P.P. NO. 604-23-2

TOTAL 7,0075 Ac.

2.30 Ac.
 P.P. NO. 604-23-2

1.03 Ac.

4.6107 Ac.

3.462 Ac.

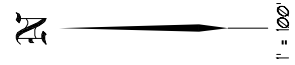
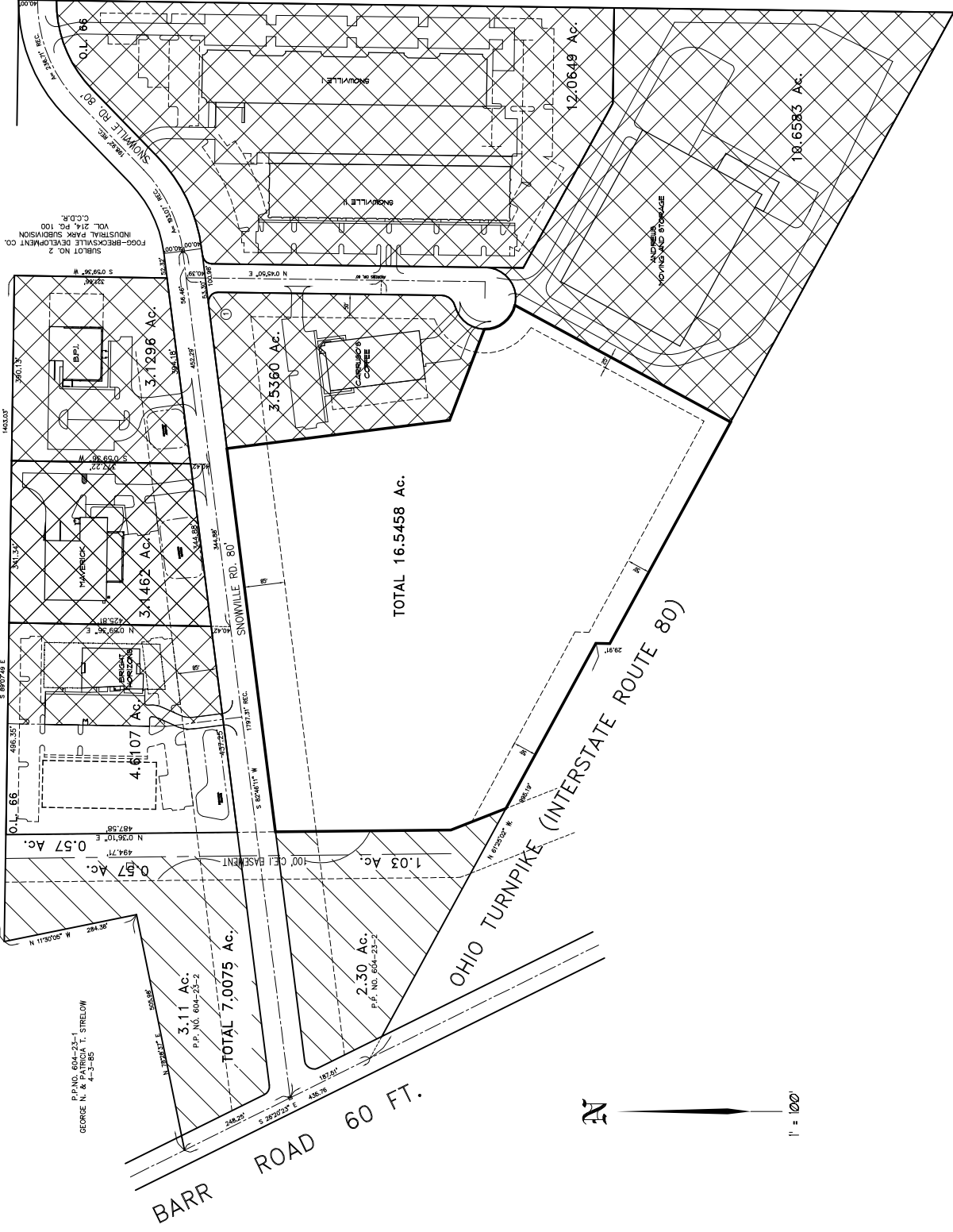
3.7296 Ac.

3.5360 Ac.

TOTAL 16.5458 Ac.

12.0649 Ac.

10.6583 Ac.

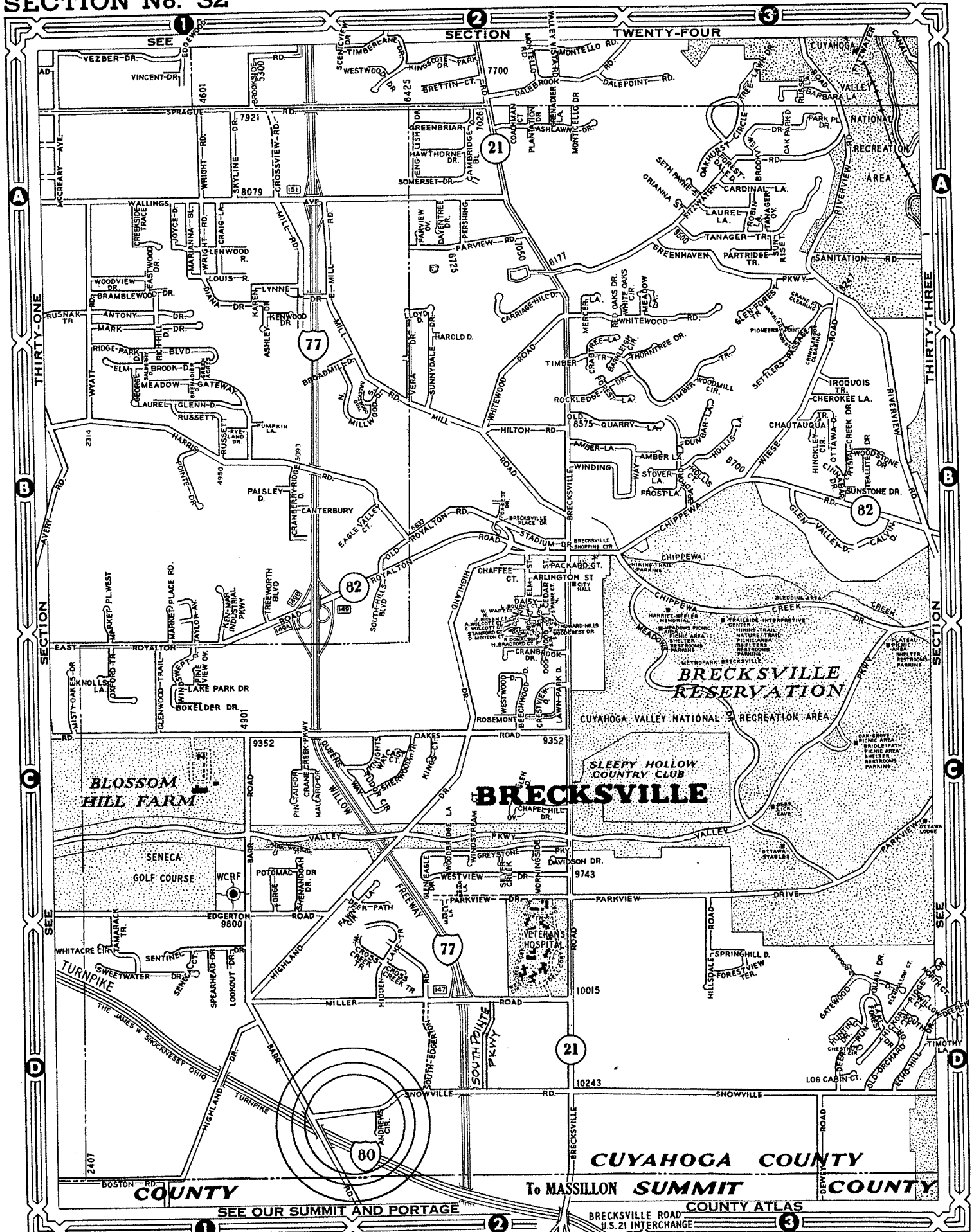


FOGG-SNOWVILLE CO.

ENGINEERS • ARCHITECTS • SURVEYORS
RAY FOGG BUILDING METHODS, INC.
 88 BENTLEYVILLE, NORTH HAVEN, CONNECTICUT 06418
 PHONE 860-268-2000
 FAX 860-268-2000

DATE	DESCRIPTION	BY	DATE
06-14	2007		

SECTION No. 32



Advantages of Fogg-Snowville Industrial Park

- Easy access to I-77, I-271, Route 21 and I-80 (Ohio Turnpike)
- Visible from I-80 (Ohio Turnpike)
- Centrally located between Cleveland and Akron
- Located in a wooded suburban area of the City of Brecksville
- Large sites available (3-5 acre minimum)
- Multi-tenant flex space available for lease
- Low cost natural gas from wells available

For more information call:

RAY FOGG CORPORATE PROPERTIES, LLC
981 Keynote Circle, Suite 15, Cleveland, Ohio 44131
(216) 351-7976